



EMD Diesel Electric Locomotive

Specifications NF210(GR12g)



Alternador D-16

Manufacturer	EMD
Model	D16
Poles	16
Max Current	450 A
Capacity	100kva
Nominal Voltage	215 v
Frequency	120 siclos/seg

Generador Auxiliar

Manufacturer	GM EMD
Type	Generador CC
Poles	6
Capacity	18KW
Nominal Voltage	74 V

Compresor

Manufacturer	Gardner Denver
Type	WBO
Model	Alternativo - 2 estágios
Capacity	225 cfm
High Pressure Cylinder	1
Diámetro en Curso	5. 3/4" x 5"
Low Pressure Cylinder	2
Diámetro Cylinder	7. 7/8" x 5"
Enfriamiento	Água
Lubrication	Bomba aceite

Motor de Tracción

Manufacturer	GM EMD
Model	D-29
Type	CC, Series
Installation	Axle Hung
Insulation Type Stator	H
Insulation Type Armature	H
Poles	4
Continuous Current	450A
Current Capacity 60 min	485A
Current Capacity 30 min	510A
Current Capacity 15 min	545A
Cooling	Forced
RPM Max	2300 rpm
Max Voltage	1250 V

Dimensiones

Distance Between End Plates	16850 mm
Max Height	4670 mm
Max Length	3000 mm
Distance Between Pilots	4013.2 mm
Truck Axle Centers	1790 mm
Axle Distance inside Trucks	1436 mm
Minimum Distance Inside Axles	1285 mm
Coupler Height	màx 815 min 724 mm
Distance Between Coupler Pins	1067mm
Distance Between Couplers	17399 mm

Datos Generales

Manufacturer	EMD
Year	1956-1960
Type	GM - HF-210
Truck Arrangement	C
Axles	6
Max Curve Radius	76,44 m
Weight Per Axle	18 t
Continuous Tracking Effort	181,5kn
Starting Tractive Effort	302,5 kn
Max Dynamic Braking	12750 Kgf
Minimum Continuous Speed	14,49 Km/h
Max Speed	97 Km/h
Rail Gauge	1000 mm
Wheel Diameter	40"
Coupler Type	Henricot IX-M4
Total Weight	110 t
Brake System	26L
Gear Ratio	63:14

Insumos

Oil Capacity	625 litros
Cooling Capacity	810 litros
Sand Capacity	0,71 m ³

Motor Diesel

Engine Manufacturer	GM EMD
Model	12-645-C
HorsePower	1269 HP
Traction HorsePower	1200 hp
Fuel Type	Diesel
Starting	Windings
Type	2 Cycle
Cylinders	12
Cylinder	645
Piston Size	10 pulgadas
Cylinder diameter	8.5 pulgadas
Control	Governador Eletr/Hidr
Fuel System	Injector
Min RPM	275 rpm
RPM Standard	835 rpm
Max RPM	910 rpm
Compression Ratio	16:01

Generadores

Generador Principal

Manufacturer	EMD
Model	D15B
Type	Generador CC
Poles	8
Nominal Voltage	600 V
Maximum Voltage	1050 V
Maximum Current	2000 A
Insulation Type	H

EMD STANDARD SPECIFICATION SHEET IS DESIGNED TO BE THE BASE FOR A UNIT OF THIS TYPE. ALL APPORATUS WILL NEED TO BE CONFIRMED CORRECT.

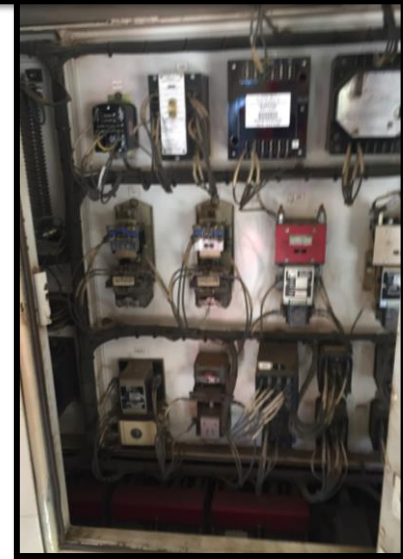
Contact: David Wilkerson, CEO MOTIVE POWER & EQUIPMENT SOLUTIONS, INC

8 Locomotive Way, Greenville, SC 29605
 Telephone(864) 918-3058
 Mobile (864) 422-1128 0

Dwilkerson@mpes.us.com - www.mpes.us.com

AAR-M-1003 Certified

GR12



Contact: David Wilkerson, CEO MOTIVE POWER & EQUIPMENT SOLUTIONS, INC

8 Locomotive Way, Greenville, SC 29605

Telephone(864) 918-3058

Mobile (864) 422-1128 O

Dwilkerson@mpes.us.com - www.mpes.us.com

AAR-M-1003 Certified



EMD DIESEL ELECTRICAL LOCOMOTIVES

SW1200 LOCOMOTIVE SPECIFICATIONS



Datos Generales

Manufacturer	EMD
Date of Manufacturing	1957-1963
Modelo	SW-1200
Class	C-C
Axles	6
Axle Weight	15 ton.
Minimum Continuous Speed	17.2 klm
Rail Gauge	1000mm
Wheel Diameter	40 pulg.
Truck Type	"C"
Brake System	261
Gear Ratio	94/17

Insumos

Oil Capacity	625 litros
Water Capacity	810 litros
Sand Capacity	0,34 m3

Motor Diesel

Manufacturer	GM EMD
Model	12-645-C
HorePower	1320 hp
Traction HorsePower	1200 hp
Fuel Type	Diesel
Starting	Generator Start Field
Cycle	2
Cylinders	12
Cylinder	645
Piston Size	10"
Cylinder Size	8.5"
Control	Governador Eletr/Hidr
Fuel System	Injector
Minimum RPM	275 rpm
Max Service RPM	835 rpm
Compression Ratio	16:01

Generadores

Generador Principal

Manufacturer	EMD
Model	D25E
Type	Generador CC
Poles	12
Nominal Voltage	600 V
Max Voltage	1050 V
Max Current	2000 A
Insulation Stator	H
Insulation Rotor	H

Alternador

Manufacturer	N/A
Model	N/A
Type	N/A
Poles	N/A
Max Continuous Current	N/A
Nominal Voltage	N/A
Frequency	N/A

Generador Auxiliar

Manufacturer	GM EMD
Type	Generador CC
Poles	6
Capacity	10KW
Nominal Voltage	115v

Compresor

Manufacturer	Gardner Denver
Type	
Model	WBG
Rating	365 cfm
Capacity	20 litros
High Pressure Cylinder	2
Diameter	5. 3/4" x 5"
Low Pressure Cylinder	4
Diameter	7. 7/8" x 5"
Cooling	Water
Lubrication	Oil Pump

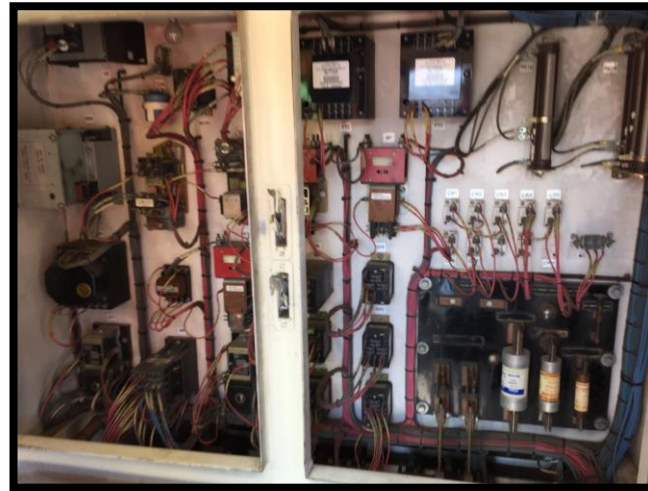
Motor de Tracción

Manufacturer	GM EMD
Model	5GE761A3
Type	GE761
Installation	Axle Mounted
Rotor Insulation	H
Stator Insulation	H
Poles	4
Continuous Current	450A
Current Capacity Ratings 60 min	485A
Current Capacity Ratings 30 min	510A
Current Capacity Ratings 15 min	545A
Cooling	Forced
Max RPM	3100
Max Voltage	1250 V

Dimensiones

Distance Between Pilots	13.504mm
Max Height	4358mm
Max Length	3149mm
	800mm

SW12



Contact: David Wilkerson, CEO MOTIVE POWER & EQUIPMENT SOLUTIONS, INC

8 Locomotive Way, Greenville, SC 29605 - Telephone(864) 918-3058 - Mobile (864) 422-1128 O - Dwilkerson@mpes.us.com - www.mpes.us.com